



GAT MONTHLY MEMBERSHIP PROGRESS REPORT

Results as of: 8/31/2023

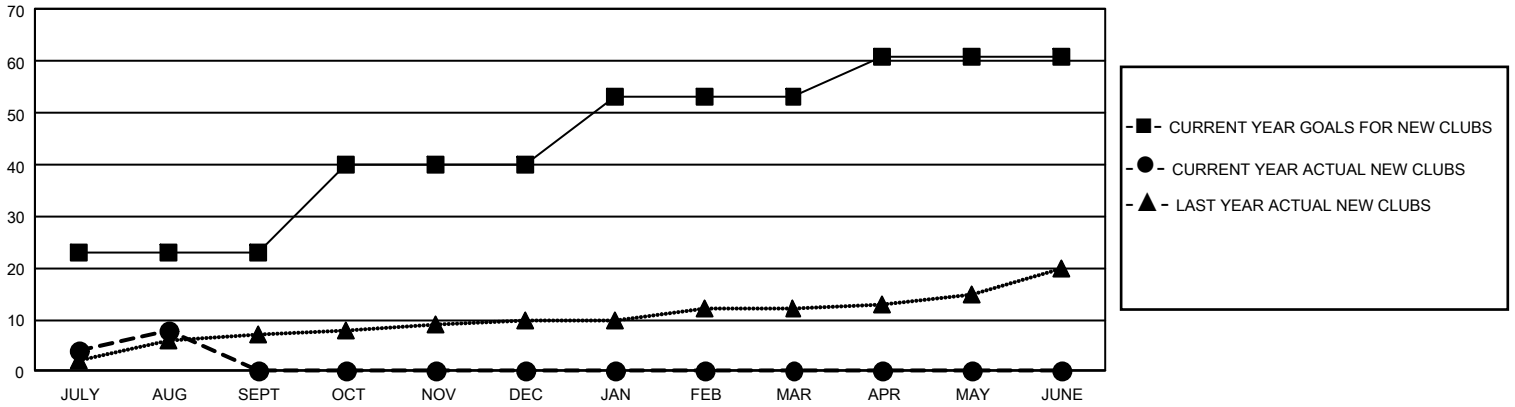
GMT Constitutional Area 6 - I, Group H

REPORT DOES NOT INCLUDE CLUBS IN UNDISTRICTED AREAS.

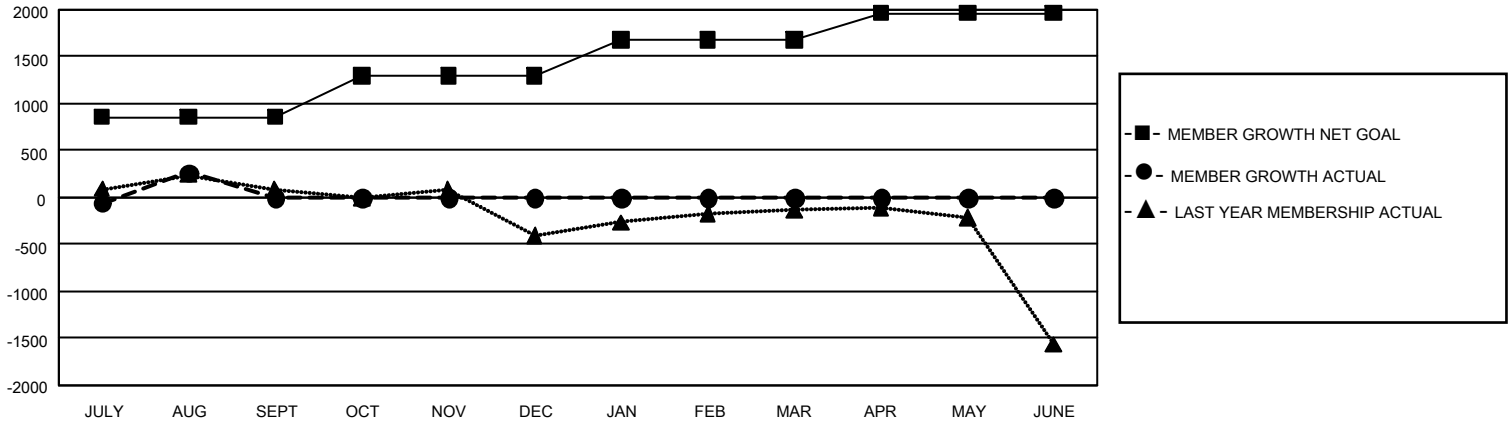
Clubs			
RESULTS FOR 2023-2024			
QUARTER	NEW CLUB GOAL	NEW CLUBS	DROPPED CLUBS
JULY/AUG/SEPT	69	8	17
OCT/NOV/DEC	51	0	0
JAN/FEB/MAR	39	0	0
APR/MAY/JUNE	24	0	0

Members			
RESULTS FOR 2023-2024			
QUARTER	MEMBER GROWTH NET GOAL	MEMBER GROWTH ACTUAL	DROPPED MEMBERS ACTUAL (including transfers)
JULY/AUG/SEPT	860	1,375	904
OCT/NOV/DEC	435	0	0
JAN/FEB/MAR	385	0	0
APR/MAY/JUNE	285	0	0

GOALS AND ACTUAL NEW CLUBS CUMULATIVE



GOALS AND ACTUAL MEMBERS CUMULATIVE



DROPPED CLUBS: 17	220 CLUBS OF 793 ADDED 1 OR MORE NEW MEMBERS	GENDER DISTRIBUTION	
		MALE 17,445 (62.44%) FEMALE 10,488 (37.54%) NON BINARY 0 (0.00%) PREFER NOT TO ANSWER 4 (0.01%)	
DROPPED MEMBERS		CLICK HERE FOR CUMULATIVE MEMBERSHIP DATA	TOTAL FAMILY UNIT MEMBERS 17,828
DECEASED 25 CLUB CANCELLED 22 OTHER 857 TOTAL 904			FAMILY MEMBERS PAYING HALF DUES 11,352